

## RCC2 Polyclonal Antibody

### Description

<b>Product type</b>	Primary Antibody
<b>Code</b>	BT-AP07722
<b>Host</b>	Rabbit
<b>Isotype</b>	IgG
<b>Size</b>	20ul, 50ul, 100ul
<b>Immunogen</b>	The antiserum was produced against synthesized peptide derived from human RCC2. AA range:473-522
<b>Mol wt</b>	56085
<b>Species reactivity</b>	Human, Mouse
<b>Clonality</b>	Polyclonal
<b>Recommended application</b>	WB, IHC-p, ELISA
<b>Concentration</b>	1 mg/ml
<b>Full name</b>	RCC2 Antibody
<b>Synonyms</b>	RCC2; KIAA1470; TD60; Protein RCC2; RCC1-like protein TD-60; Telophase disk protein of 60 kDa

**This product is for research use only, not for use in human, therapeutic or diagnostic procedure.**

### Background

RCC2/TD-60 is a member of the RCC1 (regulator of chromosome condensation 1) family of guanine nucleotide exchange factors. RCC2/TD-60 is associated with the chromosome passenger complex (CPC), which also consists of aurora B kinase, borealin, INCENP (inner centromere protein) and survivin. The CPC acts at various stages of mitosis, interacts with microtubules and is required for proper chromosome segregation and cytokinesis. Regulation of aurora B kinase is key in the regulation of the CPC. In late mitosis, RCC2/TD-60 is required for spindle assembly and recruitment of survivin and aurora B. RCC2/TD-60 is also required for aurora B activation in vitro and localization of the CPC to centromeres.

### Recommended Dilution

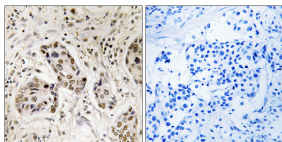
WB: 1: 500 - 1: 2000

IHC: 1: 100 - 1: 300

ELISA: 1: 5000

Not yet tested in other applications.

### Images



Immunohistochemistry analysis of paraffin-embedded human breast carcinoma tissue, using RCC2 Antibody. The picture on the right is blocked with the synthesized peptide.

### Storage

-20°C for one year