

RDM1 Polyclonal Antibody

Description

Product type	Primary Antibody
Code	BT-AP07725
Host	Rabbit
Isotype	IgG
Size	20ul, 50ul, 100ul
Immunogen	The antiserum was produced against synthesized peptide derived from human RDM1. AA range:118-167
Mol wt	31970
Species reactivity	Human
Clonality	Polyclonal
Recommended application	IHC-p, ELISA
Concentration	1 mg/ml
Full name	RDM1 Antibody
Synonyms	RDM1; RAD52B; RAD52 motif-containing protein 1; RAD52 homolog B

This product is for research use only, not for use in human, therapeutic or diagnostic procedure.

Background

RDM1 encodes RAD52 motif containing 1 involved in the cellular response to cisplatin, a drug commonly used in chemotherapy. The RAD52 motif containing 1 encoded by RDM1 contains two motifs: a motif found in RAD52, a protein that functions in DNA double-strand breaks and homologous recombination, and an RNA recognition motif (RRM) that is not found in RAD52. The RAD52 motif region in RAD52 is important for protein function and may be involved in DNA binding or oligomerization. Alternatively spliced transcript variants encoding different isoforms have been reported.

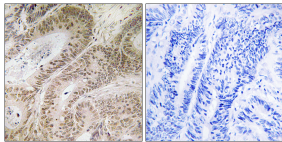
Recommended Dilution

IHC: 1: 100 - 1: 300

ELISA: 1: 5000

Not yet tested in other applications.

Images



Immunohistochemistry analysis of paraffin-embedded human colon carcinoma, using RDM1 Antibody. The picture on the right is blocked with the synthesized peptide.

Storage

-20°C for one year