

Rec8 Polyclonal Antibody

Description

Product type	Primary Antibody
Code	BT-AP07726
Host	Rabbit
Isotype	IgG
Size	20ul, 50ul, 100ul
Immunogen	The antiserum was produced against synthesized peptide derived from human REC8. AA range:154-203
Mol wt	62614
Species reactivity	Human
Clonality	Polyclonal
Recommended application	WB, ELISA
Concentration	1 mg/ml
Full name	Rec8 Antibody
Synonyms	REC8; REC8L1; Meiotic recombination protein REC8 homolog; Cohesin Rec8p

This product is for research use only, not for use in human, therapeutic or diagnostic procedure.

Background

REC8 (REC8 meiotic recombination protein) encodes a member of the kleisin family of SMC (structural maintenance of chromosome) protein partners. The protein localizes to the axial elements of chromosomes during meiosis in both oocytes and spermatocytes. In the mouse, the homologous protein is a key component of the meiotic cohesion complex, which regulates sister chromatid cohesion and recombination between homologous chromosomes. Multiple alternatively spliced variants, encoding the same protein, have been found for REC8.

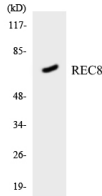
Recommended Dilution

WB: 1: 500 - 1: 2000

ELISA: 1: 5000

Not yet tested in other applications.

Images



Western blot analysis of the lysates from HT-29 cells using REC8 antibody.

Storage

-20°C for one year