

RECK Polyclonal Antibody

Description

Product type	Primary Antibody
Code	BT-AP07727
Host	Rabbit
Isotype	IgG
Size	20ul, 50ul, 100ul
Immunogen	The antiserum was produced against synthesized peptide derived from human RECK. AA range:21-70
Mol wt	106457
Species reactivity	Human, Mouse
Clonality	Polyclonal
Recommended application	IHC-p, IF, WB, ELISA
Concentration	1 mg/ml
Full name	RECK Antibody
Synonyms	RECK; ST15; Reversion-inducing cysteine-rich protein with Kazal motifs; hRECK; Suppressor of tumorigenicity 15 protein

This product is for research use only, not for use in human, therapeutic or diagnostic procedure.

Background

The protein encoded by RECK (reversion inducing cysteine rich protein with kazal motifs) is a cysteine-rich, extracellular protein with protease inhibitor-like domains whose expression is suppressed strongly in many tumors and cells transformed by various kinds of oncogenes. In normal cells, this membrane-anchored glycoprotein may serve as a negative regulator for matrix metalloproteinase-9, a key enzyme involved in tumor invasion and metastasis. Several transcript variants encoding different isoforms have been found for RECK.

Recommended Dilution

WB: 1: 500 - 2000

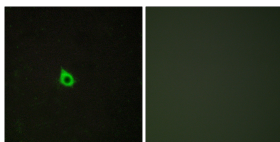
IF: 1: 200 - 1: 1000

ELISA: 1: 20000

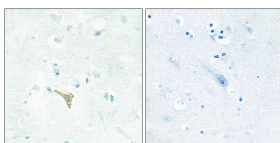
IHC: 1: 100 - 1: 300

Not yet tested in other applications.

Images



Immunofluorescence analysis of HepG2 cells, using RECK Antibody. The picture on the right is blocked with the synthesized peptide.



Immunohistochemistry analysis of paraffin-embedded human brain tissue, using RECK Antibody. The picture on the right is blocked with the synthesized peptide.

Storage

-20°C for one year

501 Changsheng S Rd, Nanhu Dist, Jiaxing, Zhejiang, China

Tel: 86 21 31007137 | E-mail: save@bt-laboratory.com | www.bt-laboratory.com