

Relaxin Receptor 2 Polyclonal Antibody

Description

Product type	Primary Antibody
Code	BT-AP07741
Host	Rabbit
Isotype	IgG
Size	20ul, 50ul, 100ul
Immunogen	The antiserum was produced against synthesized peptide derived from human RXFP2. AA range:113-162
Mol wt	86453
Species reactivity	Human, Mouse, Rat
Clonality	Polyclonal
Recommended application	WB, IF, ELISA
Concentration	1 mg/ml
Full name	Relaxin Receptor 2 Antibody
Synonyms	RXFP2; GPR106; GREAT; LGR8; Relaxin receptor 2; G-protein coupled receptor 106; G-protein coupled receptor affecting testicular descent; Leucine-rich repeat-containing G-protein coupled receptor 8; Re

This product is for research use only, not for use in human, therapeutic or diagnostic procedure.

Background

RXFP2 encodes a member of the GPCR (G protein-coupled, 7-transmembrane receptor) family. Mutations in this gene are associated with cryptorchidism. Alternatively spliced transcript variants encoding different isoforms have been found for this gene.

Recommended Dilution

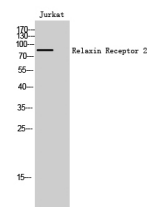
WB: 1: 500 - 1: 2000

IF: 1: 200 - 1: 1000

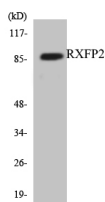
ELISA: 1: 10000

Not yet tested in other applications.

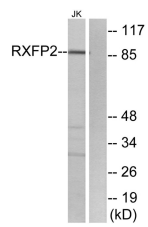
Images



Western Blot analysis of Jurkat cells using Relaxin Receptor 2 Polyclonal Antibody



Western blot analysis of the lysates from HUVEC cells using RXFP2 antibody.



Western blot analysis of lysates from Jurkat cells, using RAFP2 Antibody. The lane on the right is blocked with the synthesized peptide.

Storage

-20°C for one year

501 Changsheng S Rd, Nanhu Dist, Jiaxing, Zhejiang, China

Tel: 86 21 31007137 | E-mail: save@bt-laboratory.com | www.bt-laboratory.com