

Renin Polyclonal Antibody

Description

Product type	Primary Antibody
Code	BT-AP07749
Host	Rabbit
Isotype	IgG
Size	20ul, 50ul, 100ul
Immunogen	The antiserum was produced against synthesized peptide derived from human REN. AA range:207-256
Mol wt	45057
Species reactivity	Human
Clonality	Polyclonal
Recommended application	WB, IHC-p, ELISA
Concentration	1 mg/ml
Full name	Renin Antibody
Synonyms	REN; Renin; Angiotensinogenase

This product is for research use only, not for use in human, therapeutic or diagnostic procedure.

Background

Renin catalyzes the first step in the activation pathway of angiotensinogen—a cascade that can result in aldosterone release, vasoconstriction, and increase in blood pressure. Renin, an aspartyl protease, cleaves angiotensinogen to form angiotensin I, which is converted to angiotensin II by angiotensin I converting enzyme, an important regulator of blood pressure and electrolyte balance. Transcript variants that encode different protein isoforms and that arise from alternative splicing and the use of alternative promoters have been described, but their full-length nature has not been determined. Mutations in REN (renin) have been shown to cause familial hyperproreninemia.

Recommended Dilution

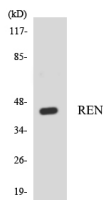
WB: 1: 500 - 1: 2000

IHC: 1: 100 - 1: 300

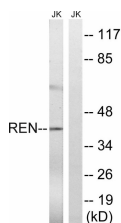
ELISA: 1: 20000

Not yet tested in other applications.

Images



Western blot analysis of the lysates from HepG2 cells using REN antibody.



Western blot analysis of lysates from Jurkat cells, using REN Antibody. The lane on the right is blocked with the synthesized peptide.

Storage

-20°C for one year

501 Changsheng S Rd, Nanhu Dist, Jiaxing, Zhejiang, China

Tel: 86 21 31007137 | E-mail: save@bt-laboratory.com | www.bt-laboratory.com