

Repo-Man Polyclonal Antibody

Description

Product type	Primary Antibody
Code	BT-AP07755
Host	Rabbit
Isotype	IgG
Size	20ul, 50ul, 100ul
Immunogen	The antiserum was produced against synthesized peptide derived from human CDCA2. AA range:511-560
Mol wt	112747
Species reactivity	Human
Clonality	Polyclonal
Recommended application	WB, IHC-p, ELISA
Concentration	1 mg/ml
Full name	Repo-Man Antibody
Synonyms	CDCA2; Cell division cycle-associated protein 2; Recruits PP1 onto mitotic chromatin at anaphase protein; Repo-Man

This product is for research use only, not for use in human, therapeutic or diagnostic procedure.

Background

CDCA2 encodes a targeting subunit of the cell-cycle associated protein, protein phosphatase 1, with a role in targeting this protein to chromatin during anaphase. These two proteins comprise a phosphatase complex that is involved in nuclear envelope reformation and regulation of the DNA damage response. The cell division cycle-associated protein 2 may also play a role in cancer progression. Alternative splicing results in multiple transcript variants.

Recommended Dilution

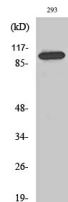
WB: 1: 500 - 1: 2000

IHC: 1: 100 - 1: 300

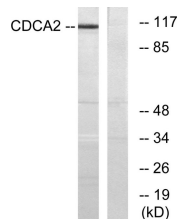
ELISA: 1: 5000

Not yet tested in other applications.

Images



Western blot analysis of various cells using Repo-Man Polyclonal Antibody diluted at 1:2000 cells nucleus.



Western blot analysis of lysates from 293 cells, using CDCA2 Antibody. The lane on the right is blocked with the synthesized peptide.

Storage

-20°C for one year

501 Changsheng S Rd, Nanhu Dist, Jiaxing, Zhejiang, China

Tel: 86 21 31007137 | E-mail: save@bt-laboratory.com | www.bt-laboratory.com