

REPS1 Polyclonal Antibody

Description

Product type	Primary Antibody
Code	BT-AP07756
Host	Rabbit
Isotype	IgG
Size	20ul, 50ul, 100ul
Immunogen	The antiserum was produced against synthesized peptide derived from human REPS1. AA range:597-646
Mol wt	80769
Species reactivity	Human
Clonality	Polyclonal
Recommended application	WB, ELISA
Concentration	1 mg/ml
Full name	REPS1 Antibody
Synonyms	REPS1; RalBP1-associated Eps domain-containing protein 1; RalBP1-interacting protein 1

This product is for research use only, not for use in human, therapeutic or diagnostic procedure.

Background

REPS1 (RALBP1 associated Eps domain containing 1) encodes a signaling adaptor protein with two EH domains that interacts with proteins that participate in signaling, endocytosis and cytoskeletal changes. The encoded protein has been found in association with intersectin 1 and Src homology 3-domain growth factor receptor-bound 2-like (endophilin) interacting protein 1 when intersectin 1 was isolated from clathrin-coated pits. The encoded protein has also been shown to interact with amphiphysin, a cytoplasmic protein at the surface of synaptic vesicles. Alternative splicing results in multiple transcript variants encoding different isoforms.

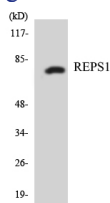
Recommended Dilution

WB: 1: 500 - 1: 2000

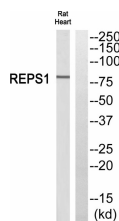
ELISA: 1: 10000

Not yet tested in other applications.

Images



Western blot analysis of the lysates from K562 cells using REPS1 antibody.



Western blot analysis of REPS1 Antibody. The lane on the right is blocked with the REPS1 peptide.

Storage

-20°C for one year

501 Changsheng S Rd, Nanhu Dist, Jiaxing, Zhejiang, China

Tel: 86 21 31007137 | E-mail: save@bt-laboratory.com | www.bt-laboratory.com