

REXO1 Polyclonal Antibody

Description

Product type	Primary Antibody
Code	BT-AP07766
Host	Rabbit
Isotype	IgG
Size	20ul, 50ul, 100ul
Immunogen	The antiserum was produced against synthesized peptide derived from human REXO1. AA range:185-234
Mol wt	131530
Species reactivity	Human
Clonality	Polyclonal
Recommended application	IHC-p, ELISA
Concentration	1 mg/ml
Full name	REXO1 Antibody
Synonyms	REXO1; ELOABP1; KIAA1138; TCEB3BP1; RNA exonuclease 1 homolog; Elongin-A-binding protein 1; EloA-BP1; Transcription elongation factor B polypeptide 3-binding protein 1

This product is for research use only, not for use in human, therapeutic or diagnostic procedure.

Background

REXO1 (REX1, RNA Exonuclease 1 Homolog) is a Protein Coding gene. Among its related pathways are Ribosome biogenesis in eukaryotes. GO annotations related to this gene include nucleic acid binding and exonuclease activity. An important paralog of this gene is LOC81691.

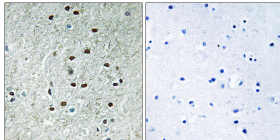
Recommended Dilution

IHC: 1: 100 - 1: 300

ELISA: 1: 20000

Not yet tested in other applications.

Images



Immunohistochemistry analysis of paraffin-embedded human brain, using REXO1 Antibody. The picture on the right is blocked with the synthesized peptide.

Storage

-20°C for one year

501 Changsheng S Rd, Nanhu Dist, Jiaxing, Zhejiang, China

Tel: 86 21 31007137 | E-mail: save@bt-laboratory.com | www.bt-laboratory.com