

RFWD3 Polyclonal Antibody

Description

Product type	Primary Antibody
Code	BT-AP07780
Host	Rabbit
Isotype	IgG
Size	20ul, 50ul, 100ul
Immunogen	The antiserum was produced against synthesized peptide derived from human RFWD3. AA range:374-423
Mol wt	85094
Species reactivity	Human
Clonality	Polyclonal
Recommended application	WB, IHC-p, ELISA
Concentration	1 mg/ml
Full name	RFWD3 Antibody
Synonyms	RFWD3; RNF201; E3 ubiquitin-protein ligase RFWD3; RING finger and WD repeat domain-containing protein 3; RING finger protein 201

This product is for research use only, not for use in human, therapeutic or diagnostic procedure.

Background

RFWD3, also named as RNF201, is a E3 ubiquitin-protein ligase that mediates the ubiquitination of p53/TP53 in the late response to DNA damage, and acts as a positive regulator of p53/TP53 stability, thereby regulating the G1/S DNA damage checkpoint. RFWD3 may act by catalyzing the formation of short polyubiquitin chains on p53/TP53 that are not targeted to the proteasome. In response to ionizing radiation, It interacts with MDM2 and enhances p53/TP53 ubiquitination, possibly by restricting MDM2 from extending polyubiquitin chains on ubiquitinated p53/TP53. (PMID: 20173098) From BLAST result, this antibody is specific to RFWD3. 45kd and 55kd maybe splicesome of RFWD3.

Recommended Dilution

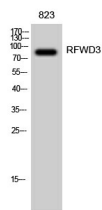
WB: 1: 500 - 1: 2000

IHC: 1: 100 - 1: 300

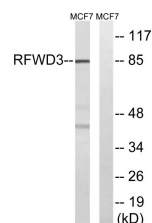
ELISA: 1: 40000

Not yet tested in other applications.

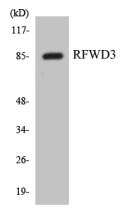
Images



Western Blot analysis of 823 cells using RFWD3 Polyclonal Antibody diluted at 1:2000



Western blot analysis of lysates from MCF-7 cells, using RFWD3 Antibody. The lane on the right is blocked with the synthesized peptide.



Western blot analysis of the lysates from HepG2 cells using RFW3 antibody.

Storage

-20°C for one year

501 Changsheng S Rd, Nanhu Dist, Jiaxing, Zhejiang, China

Tel: 86 21 31007137 | E-mail: save@bt-laboratory.com | www.bt-laboratory.com