

## RFX2 Polyclonal Antibody

### Description

<b>Product type</b>	Primary Antibody
<b>Code</b>	BT-AP07781
<b>Host</b>	Rabbit
<b>Isotype</b>	IgG
<b>Size</b>	20ul, 50ul, 100ul
<b>Immunogen</b>	The antiserum was produced against synthesized peptide derived from human RFX2. AA range:661-710
<b>Mol wt</b>	80003
<b>Species reactivity</b>	Human
<b>Clonality</b>	Polyclonal
<b>Recommended application</b>	IHC-p, ELISA
<b>Concentration</b>	1 mg/ml
<b>Full name</b>	RFX2 Antibody
<b>Synonyms</b>	RFX2; DNA-binding protein RFX2; Regulatory factor X 2

**This product is for research use only, not for use in human, therapeutic or diagnostic procedure.**

### Background

RFX2 (regulatory factor X2) is a member of the regulatory factor X gene family, which encodes transcription factors that contain a highly-conserved winged helix DNA binding domain. The protein encoded by RFX2 is structurally related to regulatory factors X1, X3, X4, and X5. It is a transcriptional activator that can bind DNA as a monomer or as a heterodimer with other RFX family members. This protein can bind to cis elements in the promoter of the IL-5 receptor alpha gene. Two transcript variants encoding different isoforms have been described for RFX2, and both variants utilize alternative polyadenylation sites.

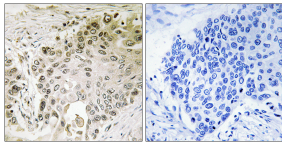
### Recommended Dilution

IHC: 1: 100 - 1: 300

ELISA: 1: 10000

Not yet tested in other applications.

### Images



Immunohistochemistry analysis of paraffin-embedded human lung carcinoma, using RFX2 Antibody. The picture on the right is blocked with the synthesized peptide.

### Storage

-20°C for one year