

## Ras-GRF1(Phospho Ser916) Polyclonal Antibody

### Description

<b>Product type</b>	Primary Antibody
<b>Code</b>	BT-AP07788
<b>Host</b>	Rabbit
<b>Isotype</b>	IgG
<b>Size</b>	20ul, 50ul, 100ul
<b>Immunogen</b>	The antiserum was produced against synthesized peptide derived from mouse Ras-GRF1 around the phosphorylation site of Ser916. AA range:882-931
<b>Mol wt</b>	145383
<b>Species reactivity</b>	Mouse, Rat
<b>Clonality</b>	Polyclonal
<b>Recommended application</b>	WB, IHC-p, IF, ICC, ELISA
<b>Concentration</b>	1 mg/ml
<b>Full name</b>	Ras-specific guanine nucleotide-releasing factor 1
<b>Synonyms</b>	Ras-specific guanine nucleotide-releasing factor 1; RASGRF1; CDC25; GNRP; GRF1; Ras-specific guanine nucleotide-releasing factor 1; Ras-GRF1; Guanine nucleotide-releasing protein; GNRP; Ras-specific nucleotide exchange factor CDC25

**This product is for research use only, not for use in human, therapeutic or diagnostic procedure.**

### Background

RASGRF1 (Ras Protein Specific Guanine Nucleotide Releasing Factor 1) is a Protein Coding gene. Diseases associated with RASGRF1 include bleeding disorder, platelet-type, 18 and refractive error. Among its related pathways are Signaling by GPCR and Immune System. GO annotations related to this gene include guanyl-nucleotide exchange factor activity and Ras guanyl-nucleotide exchange factor activity. An important paralog of this gene is RALGDS. promotes the exchange of Ras-bound GDP by GTP.

### Recommended Dilution

IHC-p: 1: 100 - 1: 300

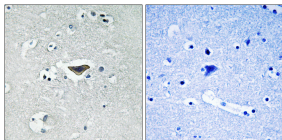
IF: 1: 200 - 1: 1000

ICC: 1: 200 - 1: 1000

ELISA: 1: 20000

Not yet tested in other applications.

### Images



Immunohistochemistry analysis of paraffin-embedded human brain, using Ras-GRF1 (Phospho-Ser916) Antibody. The picture on the right is blocked with the phospho peptide.

### Storage

-20°C for 1 year