

Rb(Phospho Ser780) Polyclonal Antibody

Description

Product type	Primary Antibody
Code	BT-AP07789
Host	Rabbit
Isotype	IgG
Size	20ul, 50ul, 100ul
Immunogen	The antiserum was produced against synthesized peptide derived from human Retinoblastoma around the phosphorylation site of Ser780. AA range:751-800
Mol wt	106159
Species reactivity	Human, Mouse, Rat
Clonality	Polyclonal
Recommended application	WB, IHC-p, IF, ICC, ELISA
Concentration	1 mg/ml
Full name	Retinoblastoma-associated protein
Synonyms	Retinoblastoma-associated protein; RB1; Retinoblastoma-associated protein; p105-Rb; pRb; Rb; pp110

This product is for research use only, not for use in human, therapeutic or diagnostic procedure.

Background

The protein encoded by this gene is a negative regulator of the cell cycle and was the first tumor suppressor gene found. The encoded protein also stabilizes constitutive heterochromatin to maintain the overall chromatin structure. The active, hypophosphorylated form of the protein binds transcription factor E2F1. Defects in this gene are a cause of childhood cancer retinoblastoma (RB), bladder cancer, and osteogenic sarcoma.

Recommended Dilution

WB: 1: 500 - 1: 2000

IHC-p: 1: 100 - 1: 300

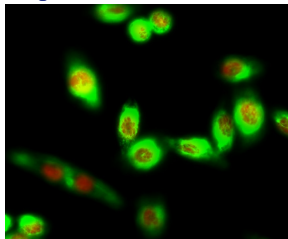
IF: 1: 200 - 1: 1000

ICC: 1: 200 - 1: 1000

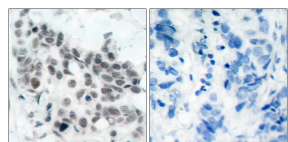
ELISA: 1: 10000

Not yet tested in other applications.

Images

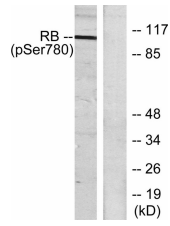
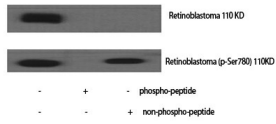


Immunofluorescence analysis of HeLa cell. Rb (phospho Ser780) Polyclonal Antibody (Red) was diluted at 1:200(4°C overnight). GFAP Monoclonal Antibody(5C8)(Green) was diluted at 1:200(4°C overnight).

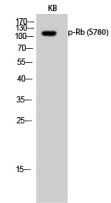


Immunohistochemistry analysis of paraffin-embedded human breast carcinoma, using Retinoblastoma (Phospho-Ser780) Antibody. The picture on the right is blocked with the phospho peptide.

Western Blot analysis of various cells using Phospho-Rb (S780) Polyclonal Antibody



Western Blot analysis of KB cells using Phospho-Rb (S780) Polyclonal Antibody



Western blot analysis of lysates from K562 cells treated with serum 10%, using Retinoblastoma (Phospho-Ser780) Antibody. The lane on the right is blocked with the phospho peptide.

Storage

-20°C for 1 year

501 Changsheng S Rd, Nanhu Dist, Jiaxing, Zhejiang, China

Tel: 86 21 31007137 | E-mail: save@bt-laboratory.com | www.bt-laboratory.com