

RGS1 Polyclonal Antibody

Description

| | |
|--------------------------------|---|
| Product type | Primary Antibody |
| Code | BT-AP07799 |
| Host | Rabbit |
| Isotype | IgG |
| Size | 20ul, 50ul, 100ul |
| Immunogen | The antiserum was produced against synthesized peptide derived from human RGS1. AA range:118-167 |
| Mol wt | 22475 |
| Species reactivity | Human, Mouse, Rat |
| Clonality | Polyclonal |
| Recommended application | WB, IHC-p, ELISA |
| Concentration | 1 mg/ml |
| Full name | RGS1 Antibody |
| Synonyms | RGS1; 1R20; BL34; IER1; Regulator of G-protein signaling 1; RGS1; B-cell activation protein BL34; Early response protein 1R20 |

This product is for research use only, not for use in human, therapeutic or diagnostic procedure.

Background

RGS1 encodes a member of the regulator of G-protein signalling family. Regulator of G-protein signaling 1 is located on the cytosolic side of the plasma membrane and contains a conserved, 120 amino acid motif called the RGS domain. The protein attenuates the signalling activity of G-proteins by binding to activated, GTP-bound G alpha subunits and acting as a GTPase activating protein (GAP), increasing the rate of conversion of the GTP to GDP. This hydrolysis allows the G alpha subunits to bind G beta/gamma subunit heterodimers, forming inactive G-protein heterotrimers, thereby terminating the signal.

Recommended Dilution

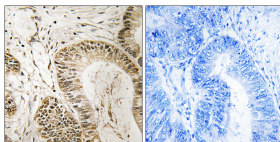
WB: 1: 500 - 1: 2000

IHC: 1: 100 - 1: 300

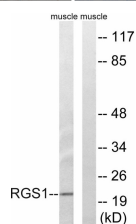
ELISA: 1: 20000

Not yet tested in other applications.

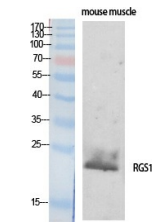
Images



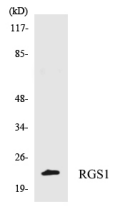
Immunohistochemistry analysis of paraffin-embedded human colon carcinoma tissue, using RGS1 Antibody. The picture on the right is blocked with the synthesized peptide.



Western blot analysis of lysates from mouse muscle cells, using RGS1 Antibody. The lane on the right is blocked with the synthesized peptide.



Western Blot analysis of various cells using RGS1 Polyclonal Antibody



Western blot analysis of the lysates from 293 cells using RGS1 antibody.

Storage

-20°C for one year

501 Changsheng S Rd, Nanhu Dist, Jiaxing, Zhejiang, China

Tel: 86 21 31007137 | E-mail: save@bt-laboratory.com | www.bt-laboratory.com