

RGS12 Polyclonal Antibody

Description

| | |
|--------------------------------|---|
| Product type | Primary Antibody |
| Code | BT-AP07801 |
| Host | Rabbit |
| Isotype | IgG |
| Size | 20ul, 50ul, 100ul |
| Immunogen | The antiserum was produced against synthesized peptide derived from human RGS12. AA range:141-190 |
| Mol wt | 156357 |
| Species reactivity | Human, Mouse, Rat |
| Clonality | Polyclonal |
| Recommended application | WB, ELISA |
| Concentration | 1 mg/ml |
| Full name | RGS12 Antibody |
| Synonyms | RGS12; Regulator of G-protein signaling 12; RGS12 |

This product is for research use only, not for use in human, therapeutic or diagnostic procedure.

Background

RGS12 (regulator of G-protein signaling 12) encodes a member of the regulator of G protein signaling (RGS) gene family. The encoded protein may function as a guanosine triphosphatase (GTPase)-activating protein as well as a transcriptional repressor. This protein may play a role in tumorigenesis. Multiple transcript variants encoding distinct isoforms have been identified for RGS12. Other alternative splice variants have been described but their biological nature has not been determined.

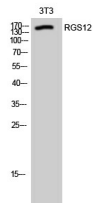
Recommended Dilution

WB: 1: 500 - 1: 2000

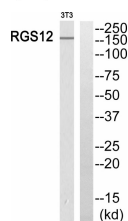
ELISA: 1: 40000

Not yet tested in other applications.

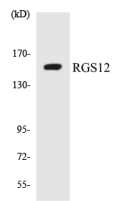
Images



Western Blot analysis of 3T3 cells using RGS12 Polyclonal Antibody cells nucleus.



Western blot analysis of RGS12 Antibody. The lane on the right is blocked with the RGS12 peptide.



Western blot analysis of the lysates from HUVEC cells using RGS12 antibody.

Storage

-20°C for one year

501 Changsheng S Rd, Nanhu Dist, Jiaxing, Zhejiang, China

Tel: 86 21 31007137 | E-mail: save@bt-laboratory.com | www.bt-laboratory.com