

## RGS7 Polyclonal Antibody

### Description

<b>Product type</b>	Primary Antibody
<b>Code</b>	BT-AP07811
<b>Host</b>	Rabbit
<b>Isotype</b>	IgG
<b>Size</b>	20ul, 50ul, 100ul
<b>Immunogen</b>	The antiserum was produced against synthesized peptide derived from human RGS7. AA range:155-204
<b>Mol wt</b>	57668
<b>Species reactivity</b>	Human, Mouse, Rat
<b>Clonality</b>	Polyclonal
<b>Recommended application</b>	WB, ELISA
<b>Concentration</b>	1 mg/ml
<b>Full name</b>	RGS7 Antibody
<b>Synonyms</b>	RGS7; Regulator of G-protein signaling 7; RGS7

This product is for research use only, not for use in human, therapeutic or diagnostic procedure.

### Background

RGS7 (Regulator Of G-Protein Signaling 7) is a Protein Coding gene. Diseases associated with RGS7 include uterine benign neoplasm and reproductive organ benign neoplasm. Among its related pathways are Activation of cAMP-Dependent PKA and G-AlphaQ Signaling. GO annotations related to this gene include signal transducer activity and G-protein beta-subunit binding. An important paralog of this gene is RGS12.

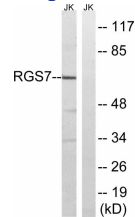
### Recommended Dilution

WB: 1: 500 - 1: 2000

ELISA: 1: 20000

Not yet tested in other applications.

### Images



Western blot analysis of lysates from Jurkat cells, using RGS7 Antibody. The lane on the right is blocked with the synthesized peptide.

### Storage

-20°C for one year