

RhCG Polyclonal Antibody

Description

Product type	Primary Antibody
Code	BT-AP07813
Host	Rabbit
Isotype	IgG
Size	20ul, 50ul, 100ul
Immunogen	Synthesized peptide derived from the Internal region of human RhCG.
Mol wt	53179
Species reactivity	Human
Clonality	Polyclonal
Recommended application	WB, IHC-p, ELISA
Concentration	1 mg/ml
Full name	RhCG Antibody
Synonyms	RHCG; C15orf6; CDRC2; PDRC2; RHGK; Ammonium transporter Rh type C; Rh glycoprotein kidney; Rhesus blood group family type C glycoprotein; Rh family type C glycoprotein; Rh type C glycoprotein; Tumor-r

This product is for research use only, not for use in human, therapeutic or diagnostic procedure.

Background

Functions as an electroneutral and bidirectional ammonium transporter. May regulate transepithelial ammonia secretion.

Recommended Dilution

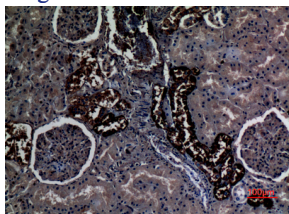
WB: 1: 500 - 1: 2000

IHC-p: 1: 100 - 300

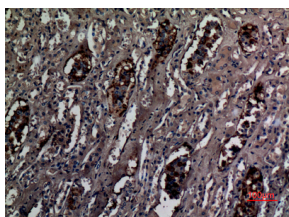
ELISA: 1: 40000

Not yet tested in other applications.

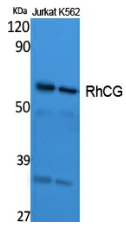
Images



Immunohistochemical analysis of paraffin-embedded human-kidney, antibody was diluted at 1:100



Immunohistochemical analysis of paraffin-embedded human-kidney, antibody was diluted at 1:100



Western Blot analysis of extracts from Jurkat, K562 cells, using RhCG Polyclonal Antibody.

Secondary antibody was diluted at 1:20000

Storage

-20°C for one year

501 Changsheng S Rd, Nanhu Dist, Jiaxing, Zhejiang, China

Tel: 86 21 31007137 | E-mail: save@bt-laboratory.com | www.bt-laboratory.com