

RHEB Polyclonal Antibody

Description

Product type	Primary Antibody
Code	BT-AP07814
Host	Rabbit
Isotype	IgG
Size	20ul, 50ul, 100ul
Immunogen	Synthetic Peptide of RHEB
Mol wt	20497
Species reactivity	Human, Mouse, Rat, Cow
Clonality	Polyclonal
Recommended application	WB, ELISA
Concentration	1 mg/ml
Full name	RHEB Antibody
Synonyms	Ras homolog enriched in brain

This product is for research use only, not for use in human, therapeutic or diagnostic procedure.

Background

RHEB (Ras homolog enriched in brain) is a member of the small GTPase superfamily and encodes a lipid-anchored, cell membrane protein with five repeats of the RAS-related GTP-binding region. This protein is vital in regulation of growth and cell cycle progression due to its role in the insulin/TOR/S6K signaling pathway. The protein has GTPase activity and shuttles between a GDP-bound form and a GTP-bound form, and farnesylation of the protein is required for this activity. Three pseudogenes have been mapped, two on chromosome 10 and one on chromosome 22.

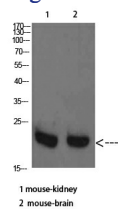
Recommended Dilution

WB: 1: 500 - 2000

ELISA: 1: 10000 - 20000

Not yet tested in other applications.

Images



Western Blot analysis of mouse-kidney mouse-brain cells using RHEB Polyclonal Antibody diluted at 1:2000.
Secondary antibody was diluted at 1:20000

Storage

-20°C for one year