

Rho D Polyclonal Antibody

Description

Product type	Primary Antibody
Code	BT-AP07826
Host	Rabbit
Isotype	IgG
Size	20ul, 50ul, 100ul
Immunogen	The antiserum was produced against synthesized peptide derived from human RHOD. AA range:113-162
Mol wt	23466
Species reactivity	Human
Clonality	Polyclonal
Recommended application	WB, ELISA
Concentration	1 mg/ml
Full name	Rho D Antibody
Synonyms	RHOD; ARHD; Rho-related GTP-binding protein RhoD; Rho-related protein HP1; RhoHP1

This product is for research use only, not for use in human, therapeutic or diagnostic procedure.

Background

Ras homolog, or Rho, proteins interact with protein kinases and may serve as targets for activated GTPase. They play a critical role in muscle differentiation. Rho-related GTP-binding protein RhoD encoded by this gene binds GTP and is a member of the small GTPase superfamily. It is involved in endosome dynamics and reorganization of the actin cytoskeleton, and it may coordinate membrane transport with the function of the cytoskeleton. Two transcript variants encoding different isoforms have been found for this gene.

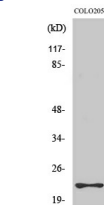
Recommended Dilution

WB: 1: 500 - 1: 2000

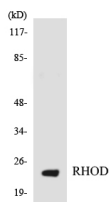
ELISA: 1: 10000

Not yet tested in other applications.

Images



Western Blot analysis of various cells using Rho D Polyclonal Antibody diluted at 1:500



Western blot analysis of the lysates from HT-29 cells using RHOD antibody.

Storage

-20°C for one year

501 Changsheng S Rd, Nanhu Dist, Jiaxing, Zhejiang, China

Tel: 86 21 31007137 | E-mail: save@bt-laboratory.com | www.bt-laboratory.com