

Rho G Polyclonal Antibody

Description

Product type	Primary Antibody
Code	BT-AP07827
Host	Rabbit
Isotype	IgG
Size	20ul, 50ul, 100ul
Immunogen	The antiserum was produced against synthesized peptide derived from human RHOG. AA range:97-146
Mol wt	21309
Species reactivity	Human, Mouse, Rat
Clonality	Polyclonal
Recommended application	WB, IHC-p, ELISA
Concentration	1 mg/ml
Full name	Rho G Antibody
Synonyms	RHOG; ARHG; Rho-related GTP-binding protein RhoG

This product is for research use only, not for use in human, therapeutic or diagnostic procedure.

Background

RHOG encodes a member of the Rho family of small GTPases, which cycle between inactive GDP-bound and active GTP-bound states and function as molecular switches in signal transduction cascades. Rho proteins promote reorganization of the actin cytoskeleton and regulate cell shape, attachment, and motility. The encoded protein facilitates translocation of a functional guanine nucleotide exchange factor (GEF) complex from the cytoplasm to the plasma membrane where ras-related C3 botulinum toxin substrate 1 is activated to promote lamellipodium formation and cell migration. Two related pseudogene have been identified on chromosomes 20 and X.

Recommended Dilution

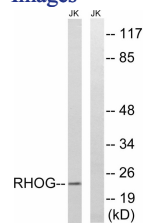
WB: 1: 500 - 1: 2000

IHC: 1: 100 - 1: 300

ELISA: 1: 40000

Not yet tested in other applications.

Images



Western blot analysis of lysates from Jurkat cells, using RHOG Antibody. The lane on the right is blocked with the synthesized peptide.

Storage

-20°C for one year