

## RHOBTB3 Polyclonal Antibody

### Description

<b>Product type</b>	Primary Antibody
<b>Code</b>	BT-AP07832
<b>Host</b>	Rabbit
<b>Isotype</b>	IgG
<b>Size</b>	20ul, 50ul, 100ul
<b>Immunogen</b>	The antiserum was produced against synthesized peptide derived from human RHOBTB3. AA range:335-384
<b>Mol wt</b>	69413
<b>Species reactivity</b>	Human, Mouse
<b>Clonality</b>	Polyclonal
<b>Recommended application</b>	WB, IHC-p, ELISA
<b>Concentration</b>	1 mg/ml
<b>Full name</b>	RHOBTB3 Antibody
<b>Synonyms</b>	RHOBTB3; KIAA0878; Rho-related BTB domain-containing protein 3

**This product is for research use only, not for use in human, therapeutic or diagnostic procedure.**

### Background

RHOBTB3 is a member of the evolutionarily conserved RHOBTB subfamily of Rho GTPases.

### Recommended Dilution

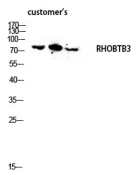
WB: 1: 500 - 1: 2000

ELISA: 1: 20000

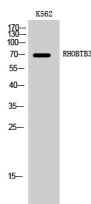
IHC-p: 1: 50 - 300

Not yet tested in other applications.

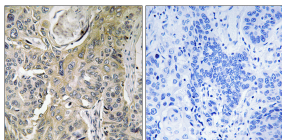
### Images



Western blot analysis of customer's lysis using RHOBTB3 antibody. Antibody was diluted at 1:2000



Western Blot analysis of K562 cells using RHOBTB3 Polyclonal Antibody diluted at 1:2000



Immunohistochemistry analysis of paraffin-embedded human lung carcinoma tissue, using RHOBTB3 Antibody. The picture on the right is blocked with the synthesized peptide.

### Storage

-20°C for one year

501 Changsheng S Rd, Nanhu Dist, Jiaxing, Zhejiang, China

Tel: 86 21 31007137 | E-mail: [save@bt-laboratory.com](mailto:save@bt-laboratory.com) | [www.bt-laboratory.com](http://www.bt-laboratory.com)