

Rhodopsin Polyclonal Antibody

Description

Product type	Primary Antibody
Code	BT-AP07834
Host	Rabbit
Isotype	IgG
Size	20ul, 50ul, 100ul
Immunogen	Synthesized peptide derived from the Internal region of human Rhodopsin.
Mol wt	39028
Species reactivity	Human, Mouse, Rat
Clonality	Polyclonal
Recommended application	WB, ELISA
Concentration	1 mg/ml
Full name	Rhodopsin Antibody
Synonyms	RHO; OPN2; Rhodopsin; Opsin-2

This product is for research use only, not for use in human, therapeutic or diagnostic procedure.

Background

Retinitis pigmentosa is an inherited progressive disease which is a major cause of blindness in western communities. It can be inherited as an autosomal dominant, autosomal recessive, or X-linked recessive disorder. In the autosomal dominant form, which comprises about 25% of total cases, approximately 30% of families have mutations in the gene encoding the rod photoreceptor-specific protein rhodopsin. This is the transmembrane protein which, when photoexcited, initiates the visual transduction cascade. Defects in this gene are also one of the causes of congenital stationary night blindness.

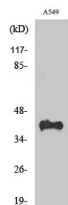
Recommended Dilution

WB: 1: 500 - 1: 2000

ELISA: 1: 10000

Not yet tested in other applications.

Images



Western Blot analysis of various cells using Rhodopsin Polyclonal Antibody

Storage

-20°C for one year