

## RhoGEF p115 Polyclonal Antibody

### Description

<b>Product type</b>	Primary Antibody
<b>Code</b>	BT-AP07836
<b>Host</b>	Rabbit
<b>Isotype</b>	IgG
<b>Size</b>	20ul, 50ul, 100ul
<b>Immunogen</b>	The antiserum was produced against synthesized peptide derived from human ARHGEF1. AA range:162-211
<b>Mol wt</b>	102435
<b>Species reactivity</b>	Human, Mouse, Rat
<b>Clonality</b>	Polyclonal
<b>Recommended application</b>	WB, ELISA
<b>Concentration</b>	1 mg/ml
<b>Full name</b>	RhoGEF p115 Antibody
<b>Synonyms</b>	ARHGEF1; Rho guanine nucleotide exchange factor 1; 115 kDa guanine nucleotide exchange factor; p115-RhoGEF; p115RhoGEF; Sub1.5

This product is for research use only, not for use in human, therapeutic or diagnostic procedure.

### Background

Rho GTPases play a fundamental role in numerous cellular processes that are initiated by extracellular stimuli that work through G protein coupled receptors. The rho guanine nucleotide exchange factor 1 may form complex with G proteins and stimulate Rho-dependent signals. Multiple alternatively spliced transcript variants have been found for this gene, but the full-length nature of some variants has not been defined.

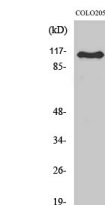
### Recommended Dilution

WB: 1: 500 - 1: 2000

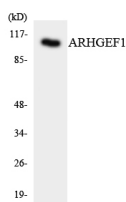
ELISA: 1: 40000

Not yet tested in other applications.

### Images



Western Blot analysis of various cells using RhoGEF p115 Polyclonal Antibody



Western blot analysis of the lysates from HepG2 cells using ARHGEF1 antibody.

## Storage

-20°C for one year

501 Changsheng S Rd, Nanhu Dist, Jiaxing, Zhejiang, China

Tel: 86 21 31007137 | E-mail: [save@bt-laboratory.com](mailto:save@bt-laboratory.com) | [www.bt-laboratory.com](http://www.bt-laboratory.com)