

Rhophilin Polyclonal Antibody

Description

Product type	Primary Antibody
Code	BT-AP07838
Host	Rabbit
Isotype	IgG
Size	20ul, 50ul, 100ul
Immunogen	The antiserum was produced against synthesized peptide derived from human RHPN1. AA range:474-523
Mol wt	101174
Species reactivity	Human
Clonality	Polyclonal
Recommended application	WB, ELISA
Concentration	1 mg/ml
Full name	Rhophilin Antibody
Synonyms	RHPN1; KIAA1929; Rhophilin-1; GTP-Rho-binding protein 1

This product is for research use only, not for use in human, therapeutic or diagnostic procedure.

Background

Has no enzymatic activity. May serve as a target for Rho, and interact with some cytoskeletal component upon Rho binding or relay a Rho signal to other molecules.

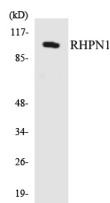
Recommended Dilution

WB: 1: 500 - 1: 2000

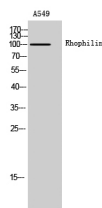
ELISA: 1: 10000

Not yet tested in other applications.

Images



Western blot analysis of the lysates from HepG2 cells using RHPN1 antibody.



Western Blot analysis of A549 cells using Rhophilin Polyclonal Antibody

Storage

-20°C for one year