

## Ribosomal Protein L17 Polyclonal Antibody

### Description

<b>Product type</b>	Primary Antibody
<b>Code</b>	BT-AP07851
<b>Host</b>	Rabbit
<b>Isotype</b>	IgG
<b>Size</b>	20ul, 50ul, 100ul
<b>Immunogen</b>	The antiserum was produced against synthesized peptide derived from human RPL17. AA range:101-150
<b>Mol wt</b>	21397
<b>Species reactivity</b>	Human, Mouse, Rat, Monkey
<b>Clonality</b>	Polyclonal
<b>Recommended application</b>	WB, IHC-p, ELISA
<b>Concentration</b>	1 mg/ml
<b>Full name</b>	Ribosomal Protein L17 Antibody
<b>Synonyms</b>	RPL17; 60S ribosomal protein L17; 60S ribosomal protein L23; PD-1

**This product is for research use only, not for use in human, therapeutic or diagnostic procedure.**

### Background

Ribosomes, the organelles that catalyze protein synthesis, consist of a small 40S subunit and a large 60S subunit. Together these subunits are composed of 4 RNA species and approximately 80 structurally distinct proteins. RPL17 encodes a ribosomal protein that is a component of the 60S subunit. 60S ribosomal protein L17 belongs to the L22P family of ribosomal proteins. It is located in the cytoplasm. This gene has been referred to as rpL23 because the encoded protein shares amino acid identity with ribosomal protein L23 from *Halobacterium marismortui*; however, its official symbol is RPL17. As is typical for genes encoding ribosomal proteins, there are multiple processed pseudogenes of this gene dispersed through the genome. Alternative splicing results in multiple transcript variants. Read-through transcription also exists between this gene and the neighboring downstream C18orf32 (chromosome 18 open reading frame 32) gene.

### Recommended Dilution

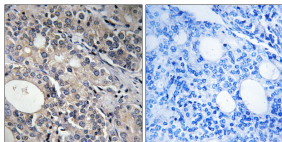
WB: 1: 500 - 1: 2000

IHC: 1: 100 - 1: 300

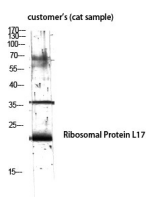
ELISA: 1: 10000

Not yet tested in other applications.

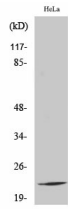
### Images



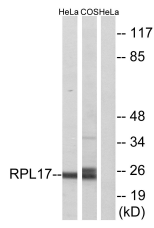
Immunohistochemistry analysis of paraffin-embedded human prostate carcinoma tissue, using RPL17 Antibody. The picture on the right is blocked with the synthesized peptide.



Western Blot analysis of customer's (cat sample) using Ribosomal Protein L17 Polyclonal Antibody diluted at 1:2000



Western Blot analysis of various cells using Ribosomal Protein L17 Polyclonal Antibody diluted at 1:2000



Western blot analysis of lysates from HeLa and COS7 cells, using RPL17 Antibody. The lane on the right is blocked with the synthesized peptide.

### Storage

-20°C for one year

501 Changsheng S Rd, Nanhu Dist, Jiaxing, Zhejiang, China

Tel: 86 21 31007137 | E-mail: [save@bt-laboratory.com](mailto:save@bt-laboratory.com) | [www.bt-laboratory.com](http://www.bt-laboratory.com)