

Ribosomal Protein L18 Polyclonal Antibody

Description

Product type	Primary Antibody
Code	BT-AP07852
Host	Rabbit
Isotype	IgG
Size	20ul, 50ul, 100ul
Immunogen	The antiserum was produced against synthesized peptide derived from human RPL18. AA range:111-160
Mol wt	21634
Species reactivity	Human, Mouse, Rat
Clonality	Polyclonal
Recommended application	WB, IHC-p, ELISA
Concentration	1 mg/ml
Full name	Ribosomal Protein L18 Antibody
Synonyms	RPL18; 60S ribosomal protein L18

This product is for research use only, not for use in human, therapeutic or diagnostic procedure.

Background

Ribosomes, the organelles that catalyze protein synthesis, consist of a small 40S subunit and a large 60S subunit. Together these subunits are composed of 4 RNA species and approximately 80 structurally distinct proteins. RPL18 encodes a member of the L18E family of ribosomal proteins that is a component of the 60S subunit. As is typical for genes encoding ribosomal proteins, there are multiple processed pseudogenes of this gene dispersed through the genome. Alternatively spliced transcript variants encoding multiple isoforms have been observed for this gene.

Recommended Dilution

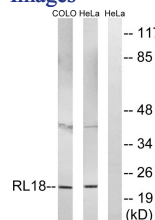
WB: 1: 500 - 1: 2000

IHC: 1: 100 - 1: 300

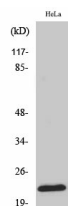
ELISA: 1: 40000

Not yet tested in other applications.

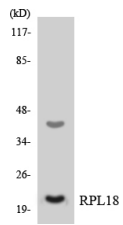
Images



Western blot analysis of lysates from HeLa and COLO cells, using RPL18 Antibody. The lane on the right is blocked with the synthesized peptide.



Western Blot analysis of various cells using Ribosomal Protein L18 Polyclonal Antibody diluted at 1:2000



Western blot analysis of the lysates from HeLa cells using RPL18 antibody.

Storage

-20°C for one year

501 Changsheng S Rd, Nanhu Dist, Jiaxing, Zhejiang, China

Tel: 86 21 31007137 | E-mail: save@bt-laboratory.com | www.bt-laboratory.com