

Ribosomal Protein L26L Polyclonal Antibody

Description

Product type	Primary Antibody
Code	BT-AP07855
Host	Rabbit
Isotype	IgG
Size	20ul, 50ul, 100ul
Immunogen	The antiserum was produced against synthesized peptide derived from human RPL26L. AA range:96-145
Mol wt	17256
Species reactivity	Human, Mouse, Rat
Clonality	Polyclonal
Recommended application	WB, IHC-p, ELISA
Concentration	1 mg/ml
Full name	Ribosomal Protein L26L Antibody
Synonyms	RPL26L1; RPL26P1; 60S ribosomal protein L26-like 1

This product is for research use only, not for use in human, therapeutic or diagnostic procedure.

Background

RPL26L1 encodes a protein that shares high sequence similarity with ribosomal protein L26. Alternative splicing results in multiple transcript variants encoding the same protein.

Recommended Dilution

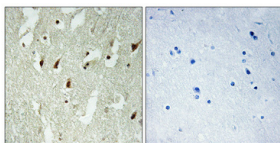
WB: 1: 500 - 1: 2000

IHC: 1: 100 - 1: 300

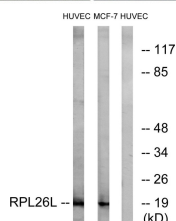
ELISA: 1: 40000

Not yet tested in other applications.

Images



Immunohistochemical analysis of paraffin-embedded Human brain. Antibody was diluted at 1:100(4° overnight). High-pressure and temperature Tris-EDTA,pH8.0 was used for antigen retrieval. Negative contrl (right) obtained from antibody was pre-absorbed by immunogen peptide.



Western blot analysis of lysates from HUVEC and MCF-7 cells, using RPL26L Antibody. The lane on the right is blocked with the synthesized peptide.



Western Blot analysis of various cells using Ribosomal Protein L26L Polyclonal Antibody diluted at 1:2000

Storage

-20°C for one year

501 Changsheng S Rd, Nanhu Dist, Jiaxing, Zhejiang, China

Tel: 86 21 31007137 | E-mail: save@bt-laboratory.com | www.bt-laboratory.com