

Ribosomal Protein L30 Polyclonal Antibody

Description

Product type	Primary Antibody
Code	BT-AP07859
Host	Rabbit
Isotype	IgG
Size	20ul, 50ul, 100ul
Immunogen	The antiserum was produced against synthesized peptide derived from human RPL30. AA range:66-115
Mol wt	12784
Species reactivity	Human, Mouse, Rat, Monkey
Clonality	Polyclonal
Recommended application	WB, IHC-p, ELISA
Concentration	1 mg/ml
Full name	Ribosomal Protein L30 Antibody
Synonyms	RPL30; 60S ribosomal protein L30

This product is for research use only, not for use in human, therapeutic or diagnostic procedure.

Background

Ribosomes, the organelles that catalyze protein synthesis, consist of a small 40S subunit and a large 60S subunit. Together these subunits are composed of 4 RNA species and approximately 80 structurally distinct proteins. RPL30 encodes a ribosomal protein that is a component of the 60S subunit. 60S ribosomal protein L30 belongs to the L30E family of ribosomal proteins. It is located in the cytoplasm. This gene is co-transcribed with the U72 small nucleolar RNA gene, which is located in its fourth intron. As is typical for genes encoding ribosomal proteins, there are multiple processed pseudogenes of this gene dispersed through the genome.

Recommended Dilution

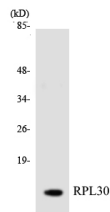
WB: 1: 500 - 1: 2000

IHC: 1: 100 - 1: 300

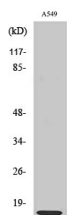
ELISA: 1: 40000

Not yet tested in other applications.

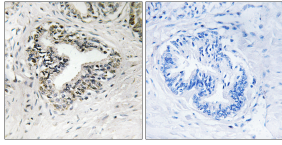
Images



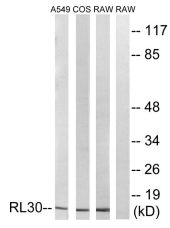
Western blot analysis of the lysates from HT-29 cells using RPL30 antibody.



Western Blot analysis of various cells using Ribosomal Protein L30 Polyclonal Antibody diluted at 1:2000



Immunohistochemistry analysis of paraffin-embedded human prostate carcinoma tissue, using RPL30 Antibody. The picture on the right is blocked with the synthesized peptide.



Western blot analysis of lysates from A549, COS7, and RAW264.7 cells, using RPL30 Antibody. The lane on the right is blocked with the synthesized peptide.

Storage

-20°C for one year

501 Changsheng S Rd, Nanhu Dist, Jiaxing, Zhejiang, China

Tel: 86 21 31007137 | E-mail: save@bt-laboratory.com | www.bt-laboratory.com