

Ribosomal Protein L37A Polyclonal Antibody

Description

Product type	Primary Antibody
Code	BT-AP07865
Host	Rabbit
Isotype	IgG
Size	20ul, 50ul, 100ul
Immunogen	The antiserum was produced against synthesized peptide derived from human RPL37A. AA range:21-70
Mol wt	10275
Species reactivity	Human, Mouse, Rat
Clonality	Polyclonal
Recommended application	IHC-p, WB, ELISA
Concentration	1 mg/ml
Full name	Ribosomal Protein L37A Antibody
Synonyms	RPL37A; 60S ribosomal protein L37a

This product is for research use only, not for use in human, therapeutic or diagnostic procedure.

Background

Ribosomes, the organelles that catalyze protein synthesis, consist of a small 40S subunit and a large 60S subunit. Together these subunits are composed of 4 RNA species and approximately 80 structurally distinct proteins. RPL37A (ribosomal protein L37a) encodes a ribosomal protein that is a component of the 60S subunit. The protein belongs to the L37AE family of ribosomal proteins. It is located in the cytoplasm. The protein contains a C4-type zinc finger-like domain. As is typical for genes encoding ribosomal proteins, there are multiple processed pseudogenes of RPL37A dispersed through the genome.

Recommended Dilution

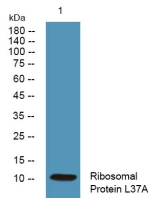
WB: 1: 500 - 2000

ELISA: 1: 40000

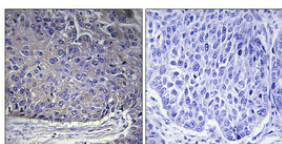
IHC: 1: 100 - 1: 300

Not yet tested in other applications.

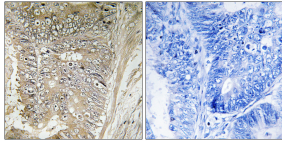
Images



Western blot analysis of lysates from K562 cells, primary antibody was diluted at 1:1000, 4° over night



Immunohistochemical analysis of paraffin-embedded Human lung cancer. Antibody was diluted at 1:100(4° overnight). High-pressure and temperature Tris-EDTA,pH8.0 was used for antigen retrieval. Negative control (right) obtained from antibody was pre-absorbed by immunogen peptide.



Immunohistochemistry analysis of paraffin-embedded human colon carcinoma tissue, using RPL37A Antibody. The picture on the right is blocked with the synthesized peptide.

Storage

-20°C for one year

501 Changsheng S Rd, Nanhu Dist, Jiaxing, Zhejiang, China

Tel: 86 21 31007137 | E-mail: save@bt-laboratory.com | www.bt-laboratory.com