

Ribosomal Protein L39L Polyclonal Antibody

Description

Product type	Primary Antibody
Code	BT-AP07867
Host	Rabbit
Isotype	IgG
Size	20ul, 50ul, 100ul
Immunogen	The antiserum was produced against synthesized peptide derived from human RPL39L. AA range:1-50
Mol wt	6293
Species reactivity	Human
Clonality	Polyclonal
Recommended application	IHC-p, ELISA
Concentration	1 mg/ml
Full name	Ribosomal Protein L39L Antibody
Synonyms	RPL39L; RPL39L1; 60S ribosomal protein L39-like; 60S ribosomal protein L39-2

This product is for research use only, not for use in human, therapeutic or diagnostic procedure.

Background

RPL39L encodes a protein sharing high sequence similarity with ribosomal protein L39. Although the name of this gene has been referred to as 'ribosomal protein L39' in the public databases, its official name is 'ribosomal protein L39-like'. It is not currently known whether the encoded protein is a functional ribosomal protein or whether it has evolved a function that is independent of the ribosome.

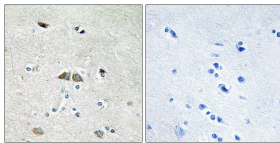
Recommended Dilution

IHC: 1: 100 - 1: 300

ELISA: 1: 40000

Not yet tested in other applications.

Images



Immunohistochemistry analysis of paraffin-embedded human brain, using RPL39L Antibody. The picture on the right is blocked with the synthesized peptide.

Storage

-20°C for one year

501 Changsheng S Rd, Nanhu Dist, Jiaxing, Zhejiang, China

Tel: 86 21 31007137 | E-mail: save@bt-laboratory.com | www.bt-laboratory.com