

## Ribosomal Protein S11 Polyclonal Antibody

### Description

<b>Product type</b>	Primary Antibody
<b>Code</b>	BT-AP07874
<b>Host</b>	Rabbit
<b>Isotype</b>	IgG
<b>Size</b>	20ul, 50ul, 100ul
<b>Immunogen</b>	The antiserum was produced against synthesized peptide derived from human RPS11. AA range:71-120
<b>Mol wt</b>	18431
<b>Species reactivity</b>	Human, Mouse, Rat
<b>Clonality</b>	Polyclonal
<b>Recommended application</b>	WB, IHC-p, ELISA
<b>Concentration</b>	1 mg/ml
<b>Full name</b>	Ribosomal Protein S11 Antibody
<b>Synonyms</b>	RPS11; 40S ribosomal protein S11

**This product is for research use only, not for use in human, therapeutic or diagnostic procedure.**

### Background

Ribosomes, the organelles that catalyze protein synthesis, consist of a small 40S subunit and a large 60S subunit. Together these subunits are composed of 4 RNA species and approximately 80 structurally distinct proteins. RPS11 (ribosomal protein S11) encodes a member of the S17P family of ribosomal proteins that is a component of the 40S subunit. RPS11 is co-transcribed with the small nucleolar RNA gene U35B, which is located in the third intron. As is typical for genes encoding ribosomal proteins, there are multiple processed pseudogenes of RPS11 dispersed throughout the genome.

### Recommended Dilution

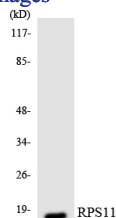
WB: 1: 500 - 1: 2000

IHC: 1: 100 - 1: 300

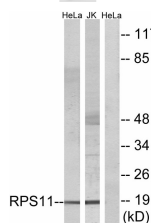
ELISA: 1: 40000

Not yet tested in other applications.

### Images



Western blot analysis of the lysates from HeLa cells using RPS11 antibody.



Western blot analysis of lysates from HeLa and Jurkat cells, using RPS11 Antibody. The lane on the right is blocked with the synthesized peptide.

## Storage

-20°C for one year

501 Changsheng S Rd, Nanhu Dist, Jiaxing, Zhejiang, China

Tel: 86 21 31007137 | E-mail: [save@bt-laboratory.com](mailto:save@bt-laboratory.com) | [www.bt-laboratory.com](http://www.bt-laboratory.com)