

Ribosomal Protein S21 Polyclonal Antibody

Description

Product type	Primary Antibody
Code	BT-AP07883
Host	Rabbit
Isotype	IgG
Size	20ul, 50ul, 100ul
Immunogen	The antiserum was produced against synthesized peptide derived from human RPS21. AA range:31-80
Mol wt	9111
Species reactivity	Human, Mouse, Rat
Clonality	Polyclonal
Recommended application	IHC-p, ELISA
Concentration	1 mg/ml
Full name	Ribosomal Protein S21 Antibody
Synonyms	RPS21; 40S ribosomal protein S21

This product is for research use only, not for use in human, therapeutic or diagnostic procedure.

Background

Ribosomes, the organelles that catalyze protein synthesis, consist of a small 40S subunit and a large 60S subunit. Together these subunits are composed of 4 RNA species and approximately 80 structurally distinct proteins. RPS21 (ribosomal protein S21) encodes a ribosomal protein that is a component of the 40S subunit. The protein belongs to the S21E family of ribosomal proteins. It is located in the cytoplasm.

Alternative splice variants that encode different protein isoforms have been described, but their existence has not been verified. As is typical for genes encoding ribosomal proteins, there are multiple processed pseudogenes of RPS21 dispersed through the genome.

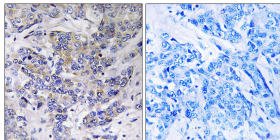
Recommended Dilution

IHC: 1: 100 - 1: 300

ELISA: 1: 10000

Not yet tested in other applications.

Images



Immunohistochemistry analysis of paraffin-embedded human breast carcinoma tissue, using RPS21 Antibody. The picture on the right is blocked with the synthesized peptide.

Storage

-20°C for one year