

Ribosomal Protein S23 Polyclonal Antibody

Description

Product type	Primary Antibody
Code	BT-AP07884
Host	Rabbit
Isotype	IgG
Size	20ul, 50ul, 100ul
Immunogen	The antiserum was produced against synthesized peptide derived from human RPS23. AA range: 1-50
Mol wt	15808
Species reactivity	Human, Mouse, Rat
Clonality	Polyclonal
Recommended application	WB, ELISA
Concentration	1 mg/ml
Full name	Ribosomal Protein S23 Antibody
Synonyms	RPS23; 40S ribosomal protein S23

This product is for research use only, not for use in human, therapeutic or diagnostic procedure.

Background

Ribosomes, the organelles that catalyze protein synthesis, consist of a small 40S subunit and a large 60S subunit. Together these subunits are composed of 4 RNA species and approximately 80 structurally distinct proteins. RPS23 (ribosomal protein S23) encodes a ribosomal protein that is a component of the 40S subunit. The protein belongs to the S12P family of ribosomal proteins. It is located in the cytoplasm. The protein shares significant amino acid similarity with *S. cerevisiae* ribosomal protein S28. As is typical for genes encoding ribosomal proteins, there are multiple processed pseudogenes of RPS23 dispersed through the genome.

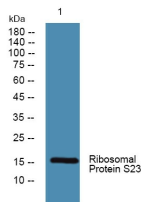
Recommended Dilution

WB: 1: 500 - 1: 2000

ELISA: 1: 10000

Not yet tested in other applications.

Images



Western blot analysis of lysates from HCT116 cells, primary antibody was diluted at 1:1000, 4° over night

Storage

-20°C for one year