

Ribosomal Protein S5 Polyclonal Antibody

Description

Product type	Primary Antibody
Code	BT-AP07890
Host	Rabbit
Isotype	IgG
Size	20ul, 50ul, 100ul
Immunogen	Synthesized peptide derived from Ribosomal Protein S5 . at AA range: 60-140
Mol wt	22876
Species reactivity	Human, Mouse, Rat
Clonality	Polyclonal
Recommended application	WB, ELISA
Concentration	1 mg/ml
Full name	Ribosomal Protein S5 Antibody
Synonyms	RPS5; 40S ribosomal protein S5

This product is for research use only, not for use in human, therapeutic or diagnostic procedure.

Background

Ribosomes, the organelles that catalyze protein synthesis, consist of a small 40S subunit and a large 60S subunit. Together these subunits are composed of 4 RNA species and approximately 80 structurally distinct proteins. RPS5 (ribosomal protein S5) encodes a ribosomal protein that is a component of the 40S subunit. The protein belongs to the S7P family of ribosomal proteins. It is located in the cytoplasm. Variable expression of RPS5 in colorectal cancers compared to adjacent normal tissues has been observed, although no correlation between the level of expression and the severity of the disease has been found. As is typical for genes encoding ribosomal proteins, there are multiple processed pseudogenes of RPS5 dispersed through the genome.

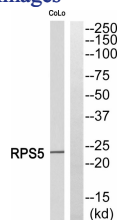
Recommended Dilution

WB: 1: 500 - 1: 2000

ELISA: 1: 5000

Not yet tested in other applications.

Images



Western blot analysis of RPS5 Antibody. The lane on the right is blocked with the RPS5 peptide.

Storage

-20°C for one year