

## Ribosomal Protein S6 Polyclonal Antibody

### Description

<b>Product type</b>	Primary Antibody
<b>Code</b>	BT-AP07891
<b>Host</b>	Rabbit
<b>Isotype</b>	IgG
<b>Size</b>	20ul, 50ul, 100ul
<b>Immunogen</b>	The antiserum was produced against synthesized peptide derived from human S6 Ribosomal Protein. AA range:191-240
<b>Mol wt</b>	28681
<b>Species reactivity</b>	Human, Mouse, Rat
<b>Clonality</b>	Polyclonal
<b>Recommended application</b>	WB, IHC-p, IF, ELISA
<b>Concentration</b>	1 mg/ml
<b>Full name</b>	Ribosomal Protein S6 Antibody
<b>Synonyms</b>	RPS6; OK/SW-cl.2; 40S ribosomal protein S6; Phosphoprotein NP33

**This product is for research use only, not for use in human, therapeutic or diagnostic procedure.**

### Background

Ribosomes, the organelles that catalyze protein synthesis, consist of a small 40S subunit and a large 60S subunit. Together these subunits are composed of 4 RNA species and approximately 80 structurally distinct proteins. RPS6 encodes a cytoplasmic ribosomal protein that is a component of the 40S subunit. 40S ribosomal protein S6 belongs to the S6E family of ribosomal proteins. It is the major substrate of protein kinases in the ribosome, with subsets of five C-terminal serine residues phosphorylated by different protein kinases. Phosphorylation is induced by a wide range of stimuli, including growth factors, tumor-promoting agents, and mitogens. Dephosphorylation occurs at growth arrest. The protein may contribute to the control of cell growth and proliferation through the selective translation of particular classes of mRNA. As is typical for genes encoding ribosomal proteins, there are multiple processed pseudogenes of this gene dispersed through the genome.

### Recommended Dilution

WB: 1: 500 - 1: 2000

IHC: 1: 100 - 1: 300

IF: 1: 200 - 1: 1000

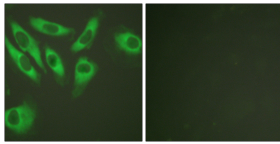
ELISA: 1: 5000

Not yet tested in other applications.

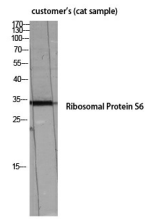
### Images



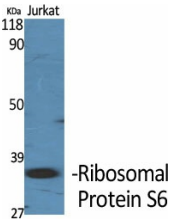
Western Blot analysis of HeLa cells using Ribosomal Protein S6 Polyclonal Antibody diluted at 1:2000



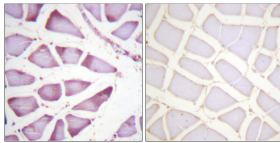
Immunofluorescence analysis of HeLa cells, using S6 Ribosomal Protein Antibody. The picture on the right is blocked with the synthesized peptide.



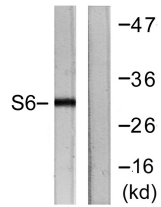
Western Blot analysis of customer's (cat sample) using Ribosomal Protein S6 Polyclonal Antibody diluted at 1:2000



Western Blot analysis of various cells using Ribosomal Protein S6 Polyclonal Antibody diluted at 1:2000



Immunohistochemistry analysis of paraffin-embedded human skeletal muscle tissue, using S6 Ribosomal Protein Antibody. The picture on the right is blocked with the synthesized peptide.



Western blot analysis of lysates from HeLa cells, treated with TNF- $\alpha$  20ng/ml 2', using S6 Ribosomal Protein Antibody. The lane on the right is blocked with the synthesized peptide.

### Storage

-20°C for one year

501 Changsheng S Rd, Nanhu Dist, Jiaxing, Zhejiang, China

Tel: 86 21 31007137 | E-mail: [save@bt-laboratory.com](mailto:save@bt-laboratory.com) | [www.bt-laboratory.com](http://www.bt-laboratory.com)