

Rim4 Polyclonal Antibody

Description

Product type	Primary Antibody
Code	BT-AP07897
Host	Rabbit
Isotype	IgG
Size	20ul, 50ul, 100ul
Immunogen	The antiserum was produced against synthesized peptide derived from human RIMS4. AA range:33-82
Mol wt	29329
Species reactivity	Human, Mouse, Rat
Clonality	Polyclonal
Recommended application	WB, IHC-p, ELISA
Concentration	1 mg/ml
Full name	Rim4 Antibody
Synonyms	RIMS4; C20orf190; Regulating synaptic membrane exocytosis protein 4; RIM4 gamma; Rab3-interacting molecule 4; RIM 4

This product is for research use only, not for use in human, therapeutic or diagnostic procedure.

Background

Regulates synaptic membrane exocytosis.

Recommended Dilution

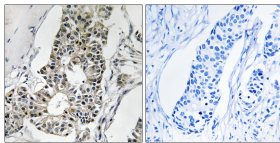
WB: 1: 500 - 1: 2000

IHC: 1: 100 - 1: 300

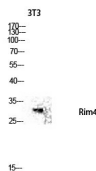
ELISA: 1: 20000

Not yet tested in other applications.

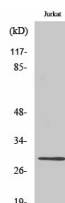
Images



Immunohistochemistry analysis of paraffin-embedded human breast carcinoma tissue, using RIMS4 Antibody. The picture on the right is blocked with the synthesized peptide.



Western blot analysis of 3T3 lysis using Rim4 antibody. Antibody was diluted at 1:500



Western Blot analysis of various cells using Rim4 Polyclonal Antibody diluted at 1:500

Storage

-20°C for one year

501 Changsheng S Rd, Nanhu Dist, Jiaxing, Zhejiang, China

Tel: 86 21 31007137 | E-mail: save@bt-laboratory.com | www.bt-laboratory.com