

RIN3 Polyclonal Antibody

Description

Product type	Primary Antibody
Code	BT-AP07900
Host	Rabbit
Isotype	IgG
Size	20ul, 50ul, 100ul
Immunogen	The antiserum was produced against synthesized peptide derived from human RIN3. AA range:391-440
Mol wt	107796
Species reactivity	Human
Clonality	Polyclonal
Recommended application	WB, ELISA
Concentration	1 mg/ml
Full name	RIN3 Antibody
Synonyms	RIN3; Ras and Rab interactor 3; Ras interaction/interference protein 3

This product is for research use only, not for use in human, therapeutic or diagnostic procedure.

Background

Ras and Rab interactor 3 encoded by RIN3 is a member of the RIN family of Ras interaction-interference proteins, which are binding partners to the RAB5 small GTPases. The protein functions as a guanine nucleotide exchange for RAB5B and RAB31. Alternative splicing results in multiple transcript variants.

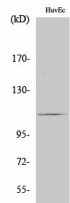
Recommended Dilution

WB: 1: 500 - 1: 2000

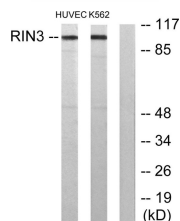
ELISA: 1: 10000

Not yet tested in other applications.

Images



Western Blot analysis of various cells using RIN3 Polyclonal Antibody



Western blot analysis of lysates from HUVEC and K562 cells, using RIN3 Antibody. The lane on the right is blocked with the synthesized peptide.

Storage

-20°C for one year

