

Rpb1(Phospho Ser1619) Polyclonal Antibody

Description

Product type	Primary Antibody
Code	BT-AP07909
Host	Rabbit
Isotype	IgG
Size	20ul, 50ul, 100ul
Immunogen	The antiserum was produced against synthesized peptide derived from human POLR2A around the phosphorylation site of Ser1619. AA range:1585-1634
Mol wt	217206
Species reactivity	Human, Mouse, Rat, Monkey
Clonality	Polyclonal
Recommended application	WB, IHC-p, IF, ICC, ELISA
Concentration	1 mg/ml
Full name	DNA-directed RNA polymerase II subunit RPB1
Synonyms	DNA-directed RNA polymerase II subunit RPB1; POLR2A; POLR2; DNA-directed RNA polymerase II subunit RPB1; RNA polymerase II subunit B1; DNA-directed RNA polymerase II subunit A; DNA-directed RNA polymerase III largest subunit; RNA-directed RNA polymerase II subunit RPB1

This product is for research use only, not for use in human, therapeutic or diagnostic procedure.

Background

This gene encodes the largest subunit of RNA polymerase II| the polymerase responsible for synthesizing messenger RNA in eukaryotes. The product of this gene contains a carboxy terminal domain composed of heptapeptide repeats that are essential for polymerase activity. These repeats contain serine and threonine residues that are phosphorylated in actively transcribing RNA polymerase. In addition| this subunit| in combination with several other polymerase subunits| forms the DNA binding domain of the polymerase| a groove in which the DNA template is transcribed into RNA.

Recommended Dilution

WB: 1: 500 - 1: 2000

IHC-p: 1: 100 - 1: 300

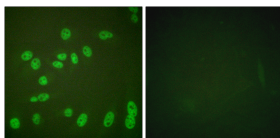
IF: 1: 200 - 1: 1000

ICC: 1: 200 - 1: 1000

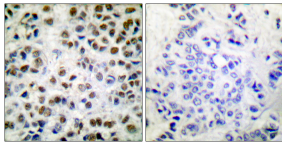
ELISA: 1: 10000

Not yet tested in other applications.

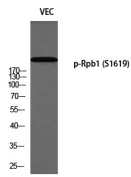
Images



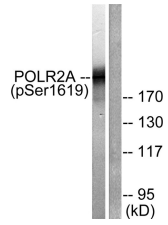
Immunofluorescence analysis of HeLa cells treated with PMA 125ng/ml 30', using POLR2A (Phospho-Ser1619) Antibody. The picture on the right is blocked with the phospho peptide.



Immunohistochemistry analysis of paraffin-embedded human breast carcinoma, using POLR2A (Phospho-Ser1619) Antibody. The picture on the right is blocked with the phospho peptide.



Western blot analysis of VEC using p-Rpb1 (S1619) antibody. Antibody was diluted at 1:2000



Western blot analysis of lysates from COS7 cells treated with EGF 200ng/ml 30', using POLR2A (Phospho-Ser1619) Antibody. The lane on the right is blocked with the phospho peptide.

Storage

-20°C for 1 year

501 Changsheng S Rd, Nanhu Dist, Jiaxing, Zhejiang, China

Tel: 86 21 31007137 | E-mail: save@bt-laboratory.com | www.bt-laboratory.com