

CNPY3 Polyclonal Antibody

Description

Product type	Primary Antibody
Code	BT-AP07912
Host	Rabbit
Isotype	IgG
Size	20ul, 50ul, 100ul
Immunogen	Synthetic peptide from human protein at AA range: 1-50
Mol wt	N/A
Species reactivity	Human, Mouse
Clonality	Polyclonal
Recommended application	IHC-p, IF, ELISA
Concentration	1 mg/ml
Full name	Protein canopy homolog 3
Synonyms	Protein canopy homolog 3 ;CTG repeat protein 4a;Expanded repeat-domain protein CAG/CTG 5;Protein associated with TLR4;Trinucleotide repeat-containing gene 5 protein; Protein canopy homolog 3; CTG repeat protein 4a; Expanded repeat-domain protein CAG/CTG 5; Protein associated with TLR4; Trinucleotide repeat-containing gene 5 protein

This product is for research use only, not for use in human, therapeutic or diagnostic procedure.

Background

This gene encodes a protein that binds members of the toll-like receptor protein family and functions as a chaperone to aid in folding and export of these proteins. Alternative splicing results in multiple transcript variants. Naturally occurring readthrough transcription occurs between this locus and the downstream GNMT (glycine N-methyltransferase) gene and is represented with GeneID:107080644.

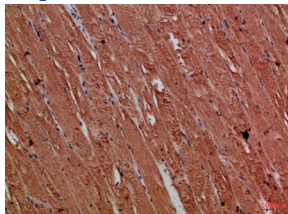
Recommended Dilution

IHC-p: 1: 50 - 1: 200

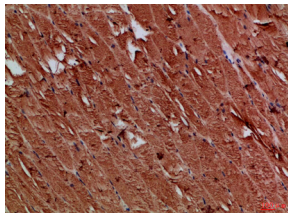
ELISA: 1: 10000 - 1: 20000

Not yet tested in other applications.

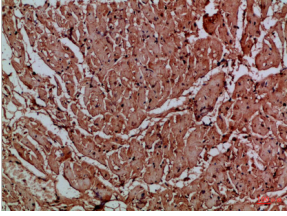
Images



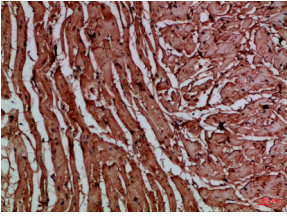
Immunohistochemical analysis of paraffin-embedded Human-heart, antibody was diluted at 1:100



Immunohistochemical analysis of paraffin-embedded Human-heart, antibody was diluted at 1:100



Immunohistochemical analysis of paraffin-embedded Human-skeletal-muscle, antibody was diluted at 1:100



Immunohistochemical analysis of paraffin-embedded Human-skeletal-muscle, antibody was diluted at 1:100

Storage

-20°C for 1 year

501 Changsheng S Rd, Nanhu Dist, Jiaxing, Zhejiang, China

Tel: 86 21 31007137 | E-mail: save@bt-laboratory.com | www.bt-laboratory.com