

CO8G Polyclonal Antibody

Description

Product type	Primary Antibody
Code	BT-AP07924
Host	Rabbit
Isotype	IgG
Size	20ul, 50ul, 100ul
Immunogen	Synthesized peptide derived from part region of human protein
Mol wt	N/A
Species reactivity	Human, Mouse
Clonality	Polyclonal
Recommended application	WB, ELISA
Concentration	1 mg/ml
Full name	Complement component C8 gamma chain
Synonyms	Complement component C8 gamma chain

This product is for research use only, not for use in human, therapeutic or diagnostic procedure.

Background

The protein encoded by this gene belongs to the lipocalin family. It is one of the three subunits that constitutes complement component 8 (C8), which is composed of a disulfide-linked C8 alpha-gamma heterodimer and a non-covalently associated C8 beta chain. C8 participates in the formation of the membrane attack complex (MAC) on bacterial cell membranes. While subunits alpha and beta play a role in complement-mediated bacterial killing, the gamma subunit is not required for the bactericidal activity.

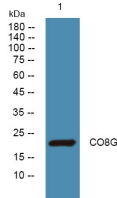
Recommended Dilution

WB: 1: 500 - 1: 2000

ELISA: 1: 5000 - 1: 20000

Not yet tested in other applications.

Images



Western blot analysis of lysates from KB cells, primary antibody was diluted at 1:1000, 4°C overnight

Storage

-20°C for 1 year