

S-Tag Polyclonal Antibody

Description

Product type	Primary Antibody
Code	BT-AP07943
Host	Rabbit
Isotype	IgG
Size	20ul, 50uL, 100ul
Immunogen	Synthetic peptide within S tag.
Mol wt	N/A
Species reactivity	Species independent
Clonality	Polyclonal
Recommended application	WB, ELISA
Concentration	1 mg/ml
Full name	S Tag
Synonyms	S Tag; KETAAAKFERQHMS tag antibody antibody S peptide antibody S peptide epitope tag antibody

This product is for research use only, not for use in human, therapeutic or diagnostic procedure.

Background

Recommended Dilution

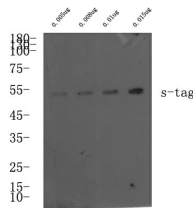
WB: 1: 1000 - 5000

ELISA: 1: 5000 - 1: 20000

ELISA: 1: 20000

Not yet tested in other applications.

Images



Western blot analysis of S-Tag fusion protein at 0.05-0.15ug, 4°C overnight, secondary antibody was diluted at 1:10000, 37°C 1hour.

Storage

-20°C for 1 year

501 Changsheng S Rd, Nanhu Dist, Jiaxing, Zhejiang, China

Tel: 86 21 31007137 | E-mail: save@bt-laboratory.com | www.bt-laboratory.com