

Separase(Phospho Ser801) Polyclonal Antibody

Description

Product type	Primary Antibody
Code	BT-AP07944
Host	Rabbit
Isotype	IgG
Size	20ul, 50ul, 100ul
Immunogen	The antiserum was produced against synthesized peptide derived from human SEPARASE around the phosphorylation site of Ser801. AA range:767-816
Mol wt	233113
Species reactivity	Human, Mouse
Clonality	Polyclonal
Recommended application	WB, IHC-p, IF, ICC, ELISA
Concentration	1 mg/ml
Full name	Separin
Synonyms	Separin; ESPL1; ESP1; KIAA0165; Separin; Caspase-like protein ESPL1; Extra spindle poles-like 1 protein; Separase

This product is for research use only, not for use in human, therapeutic or diagnostic procedure.

Background

Stable cohesion between sister chromatids before anaphase and their timely separation during anaphase are critical for chromosome inheritance. In vertebrates| sister chromatid cohesion is released in 2 steps via distinct mechanisms. The first step involves phosphorylation of STAG1 (MIM 604358) or STAG2 (MIM 300826) in the cohesin complex. The second step involves cleavage of the cohesin subunit SCC1 (RAD21; MIM 606462) by ESPL1| or separase| which initiates the final separation of sister chromatids (Sun et al.| 2009

Recommended Dilution

WB: 1: 500 - 1: 2000

IHC-p: 1: 100 - 1: 300

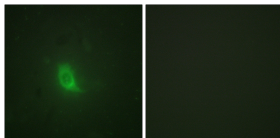
IF: 1: 200 - 1: 1000

ICC: 1: 200 - 1: 1000

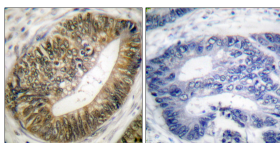
ELISA: 1: 40000

Not yet tested in other applications.

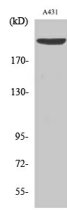
Images



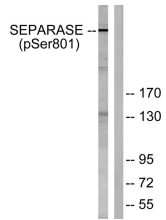
Immunofluorescence analysis of HUVEC cells, using SEPARASE (Phospho-Ser801) Antibody. The picture on the right is blocked with the phospho peptide.



Immunohistochemistry analysis of paraffin-embedded human colon carcinoma, using SEPARASE (Phospho-Ser801) Antibody. The picture on the right is blocked with the phospho peptide.



Western Blot analysis of various cells using Phospho-Separase (S801) Polyclonal Antibody diluted at 1:1000



Western blot analysis of lysates from 293 cells treated with EGF 200ng/ml 30', using SEPARASE (Phospho-Ser801) Antibody. The lane on the right is blocked with the phospho peptide.

Storage

-20°C for 1 year

501 Changsheng S Rd, Nanhu Dist, Jiaxing, Zhejiang, China

Tel: 86 21 31007137 | E-mail: save@bt-laboratory.com | www.bt-laboratory.com