

## RNF130 Polyclonal Antibody

### Description

<b>Product type</b>	Primary Antibody
<b>Code</b>	BT-AP07952
<b>Host</b>	Rabbit
<b>Isotype</b>	IgG
<b>Size</b>	20ul, 50ul, 100ul
<b>Immunogen</b>	The antiserum was produced against synthesized peptide derived from human RNF130. AA range:231-280
<b>Mol wt</b>	30810
<b>Species reactivity</b>	Human, Mouse, Rat
<b>Clonality</b>	Polyclonal
<b>Recommended application</b>	WB, ELISA
<b>Concentration</b>	1 mg/ml
<b>Full name</b>	RNF130 Antibody
<b>Synonyms</b>	RNF130; E3 ubiquitin-protein ligase RNF130; Goliath homolog; H-Goliath; RING finger protein 130

**This product is for research use only, not for use in human, therapeutic or diagnostic procedure.**

### Background

E3 ubiquitin-protein ligase RNF130 encoded by this gene contains a RING finger motif and is similar to g1, a Drosophila zinc-finger protein that is expressed in mesoderm and involved in embryonic development. The expression of the mouse counterpart was found to be upregulated in myeloblastic cells following IL3 deprivation, suggesting that this gene may regulate growth factor withdrawal-induced apoptosis of myeloid precursor cells. Alternative splicing results in multiple transcript variants.

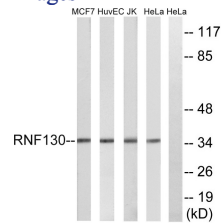
### Recommended Dilution

WB: 1: 500 - 1: 2000

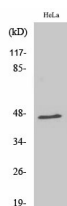
ELISA: 1: 5000

Not yet tested in other applications.

### Images



Western blot analysis of lysates from HeLa, Jurkat, HUVEC, and MCF-7 cells, using RNF130 Antibody. The lane on the right is blocked with the synthesized peptide.



Western Blot analysis of various cells using RNF130 Polyclonal Antibody diluted at 1:1000

## Storage

-20°C for one year

501 Changsheng S Rd, Nanhu Dist, Jiaxing, Zhejiang, China

Tel: 86 21 31007137 | E-mail: [save@bt-laboratory.com](mailto:save@bt-laboratory.com) | [www.bt-laboratory.com](http://www.bt-laboratory.com)