

RNF138 Polyclonal Antibody

Description

Product type	Primary Antibody
Code	BT-AP07953
Host	Rabbit
Isotype	IgG
Size	20ul, 50ul, 100ul
Immunogen	The antiserum was produced against synthesized peptide derived from human RNF138. AA range:31-80
Mol wt	28193
Species reactivity	Human, Mouse, Rat
Clonality	Polyclonal
Recommended application	WB, ELISA
Concentration	1 mg/ml
Full name	RNF138 Antibody
Synonyms	RNF138; NARF; HSD-4; HSD4; E3 ubiquitin-protein ligase RNF138; Nemo-like kinase-associated RING finger protein; NLK-associated RING finger protein; hNARF; RING finger protein 138

This product is for research use only, not for use in human, therapeutic or diagnostic procedure.

Background

The protein encoded by RNF138 (ring finger protein 138) contains a RING finger, a motif present in a variety of functionally distinct proteins and known to be involved in protein-DNA and protein-protein interactions. Alternatively spliced transcript variants encoding distinct isoforms have been observed.

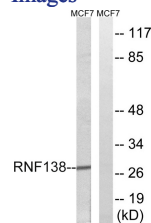
Recommended Dilution

WB: 1: 500 - 1: 2000

ELISA: 1: 20000

Not yet tested in other applications.

Images



Western blot analysis of lysates from MCF-7 cells, using RNF138 Antibody. The lane on the right is blocked with the synthesized peptide.

Storage

-20°C for one year