

RN-tre Polyclonal Antibody

Description

Product type	Primary Antibody
Code	BT-AP07959
Host	Rabbit
Isotype	IgG
Size	20ul, 50ul, 100ul
Immunogen	The antiserum was produced against synthesized peptide derived from human USP6NL. AA range:451-500
Mol wt	94104
Species reactivity	Human
Clonality	Polyclonal
Recommended application	IHC-p, ELISA
Concentration	1 mg/ml
Full name	RN-tre Antibody
Synonyms	USP6NL; KIAA0019; USP6 N-terminal-like protein; Related to the N-terminus of tre; RN-tre

This product is for research use only, not for use in human, therapeutic or diagnostic procedure.

Background

USP6NL (USP6 N-Terminal Like) is a Protein Coding gene. Among its related pathways are Golgi-to-ER retrograde transport and Vesicle-mediated transport. GO annotations related to this gene include GTPase activator activity and Rab GTPase binding. An important paralog of this gene is TBC1D10C.

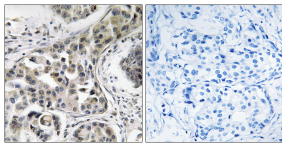
Recommended Dilution

IHC: 1: 100 - 1: 300

ELISA: 1: 10000

Not yet tested in other applications.

Images



Immunohistochemistry analysis of paraffin-embedded human breast carcinoma, using USP6NL Antibody. The picture on the right is blocked with the synthesized peptide.

Storage

-20°C for one year

501 Changsheng S Rd, Nanhu Dist, Jiaxing, Zhejiang, China

Tel: 86 21 31007137 | E-mail: save@bt-laboratory.com | www.bt-laboratory.com