

RO60 Polyclonal Antibody

Description

Product type	Primary Antibody
Code	BT-AP07961
Host	Rabbit
Isotype	IgG
Size	20ul, 50ul, 100ul
Immunogen	The antiserum was produced against synthesized peptide derived from human TROVE2. AA range:311-360
Mol wt	60671
Species reactivity	Human
Clonality	Polyclonal
Recommended application	WB, ELISA
Concentration	1 mg/ml
Full name	RO60 Antibody
Synonyms	TROVE2; RO60; SSA2; 60 kDa SS-A/Ro ribonucleoprotein; 60 kDa Ro protein; 60 kDa ribonucleoprotein Ro; RoRNP; Ro 60 kDa autoantigen; Sjogren syndrome antigen A2; Sjogren syndrome type A antigen; SS-A

This product is for research use only, not for use in human, therapeutic or diagnostic procedure.

Background

TROVE2 (TROVE Domain Family Member 2) is a Protein Coding gene. Diseases associated with TROVE2 include sjogren's syndrome and congenital heart block. Among its related pathways are Activated PKN1 stimulates transcription of AR (androgen receptor) regulated genes KLK2 and KLK3. GO annotations related to this gene include RNA binding and U2 snRNA binding.

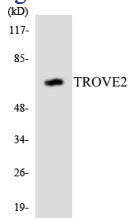
Recommended Dilution

WB: 1: 500 - 1: 2000

ELISA: 1: 20000

Not yet tested in other applications.

Images



Western blot analysis of the lysates from HepG2 cells using TROVE2 antibody.

Storage

-20°C for one year