

CK092 Rabbit Polyclonal Antibody

Description

Product type	Primary Antibody
Code	BT-AP07963
Host	Rabbit
Isotype	IgG
Size	20ul, 50ul, 100ul
Immunogen	Synthesized peptide derived from human CK092
Mol wt	13640
Species reactivity	Human, Rat, Mouse
Clonality	Polyclonal
Recommended application	WB
Concentration	1 mg/ml
Full name	CK092
Synonyms	CK092

This product is for research use only, not for use in human, therapeutic or diagnostic procedure.

Background

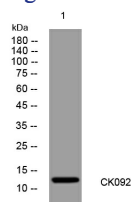
This gene encodes a transmembrane protein that localizes to granular structures| including crystalloid eosinophilic granules and other granular organelles. This gene| along with an overlapping opposite strand gene| has been implicated as a susceptibility locus for colorectal cancer. Alternative splicing of this gene results in multiple transcript variants.

Recommended Dilution

WB: 1: 500 - 1: 2000

Not yet tested in other applications.

Images



Western blot analysis of lysates from HeLa cells, primary antibody was diluted at 1:1000, 4°C overnight

Storage

-20°C for 1 year

501 Changsheng S Rd, Nanhu Dist, Jiaxing, Zhejiang, China

Tel: 86 21 31007137 | E-mail: save@bt-laboratory.com | www.bt-laboratory.com