

## Rock-2 Polyclonal Antibody

### Description

Product type	Primary Antibody
Code	BT-AP07970
Host	Rabbit
Isotype	IgG
Size	20ul, 50ul, 100ul
Immunogen	The antiserum was produced against synthesized peptide derived from human ROCK2. AA range:691-740
Mol wt	160913
Species reactivity	Human, Mouse, Rat, Monkey
Clonality	Polyclonal
Recommended application	WB, ELISA
Concentration	1 mg/ml
Full name	Rock-2 Antibody
Synonyms	ROCK2; KIAA0619; Rho-associated protein kinase 2; Rho kinase 2; Rho-associated; coiled-coil-containing protein kinase 2; Rho-associated, coiled-coil-containing protein kinase II; ROCK-II; p164 ROCK-2

**This product is for research use only, not for use in human, therapeutic or diagnostic procedure.**

### Background

Rho-associated protein kinase 2 encoded by ROCK2 is a serine/threonine kinase that regulates cytokinesis, smooth muscle contraction, the formation of actin stress fibers and focal adhesions, and the activation of the c-fos serum response element. This protein, which is an isozyme of ROCK1 is a target for the small GTPase Rho.

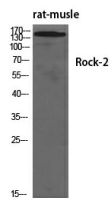
### Recommended Dilution

WB: 1: 500 - 1: 2000

ELISA: 1: 40000

Not yet tested in other applications.

### Images



Western Blot analysis of various cells using Rock-2 Polyclonal Antibody diluted at 1:1000

### Storage

-20°C for one year