

RoXaN Polyclonal Antibody

Description

Product type	Primary Antibody
Code	BT-AP07979
Host	Rabbit
Isotype	IgG
Size	20ul, 50ul, 100ul
Immunogen	The antiserum was produced against synthesized peptide derived from human ZC3H7B. AA range:851-900
Mol wt	111578
Species reactivity	Human
Clonality	Polyclonal
Recommended application	WB, IHC-p, ELISA
Concentration	1 mg/ml
Full name	RoXaN Antibody
Synonyms	ZC3H7B; KIAA1031; Zinc finger CCCH domain-containing protein 7B; Rotavirus 'X'-associated non-structural protein; RoXaN

This product is for research use only, not for use in human, therapeutic or diagnostic procedure.

Background

ZC3H7B encodes a protein that contains a tetratricopeptide repeat domain. The zinc finger CCCH domain-containing protein 7B also interacts with the rotavirus non-structural protein NSP3.

Recommended Dilution

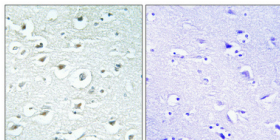
WB: 1: 500 - 1: 2000

IHC: 1: 100 - 1: 300

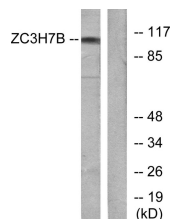
ELISA: 1: 10000

Not yet tested in other applications.

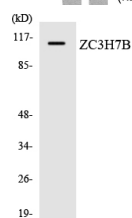
Images



Immunohistochemical analysis of paraffin-embedded Human brain. Antibody was diluted at 1:100(4° overnight). High-pressure and temperature Tris-EDTA,pH8.0 was used for antigen retrieval. Negative contrl (right) obtained from antibody was pre-absorbed by immunogen peptide.



Western blot analysis of lysates from 293 cells, using ZC3H7B Antibody. The lane on the right is blocked with the synthesized peptide.



Western blot analysis of the lysates from HUVECcells using ZC3H7B antibody.



Western Blot analysis of various cells using RoXaN Polyclonal Antibody cells nucleus.

Storage

-20°C for one year

501 Changsheng S Rd, Nanhu Dist, Jiaxing, Zhejiang, China

Tel: 86 21 31007137 | E-mail: save@bt-laboratory.com | www.bt-laboratory.com