

## Connexin 43(Phospho Ser261) Polyclonal Antibody

### Description

<b>Product type</b>	Primary Antibody
<b>Code</b>	BT-AP07982
<b>Host</b>	Rabbit
<b>Isotype</b>	IgG
<b>Size</b>	20ul, 50ul, 100ul
<b>Immunogen</b>	The antiserum was produced against synthesized peptide derived from human Connexin 43 around the phosphorylation site of Ser261. AA range:226-275
<b>Mol wt</b>	43008
<b>Species reactivity</b>	Human, Rat, Mouse
<b>Clonality</b>	Polyclonal
<b>Recommended application</b>	IHC-p, IF, ELISA
<b>Concentration</b>	1 mg/ml
<b>Full name</b>	Gap junction alpha-1 protein
<b>Synonyms</b>	Gap junction alpha-1 protein; GJA1; GJAL; Gap junction alpha-1 protein; Connexin-43; Cx43; Gap junction 43 kDa heart protein

**This product is for research use only, not for use in human, therapeutic or diagnostic procedure.**

### Background

This gene is a member of the connexin gene family. The encoded protein is a component of gap junctions, which are composed of arrays of intercellular channels that provide a route for the diffusion of low molecular weight materials from cell to cell. The encoded protein is the major protein of gap junctions in the heart that are thought to have a crucial role in the synchronized contraction of the heart and in embryonic development. A related intronless pseudogene has been mapped to chromosome 5. Mutations in this gene have been associated with oculodentodigital dysplasia, autosomal recessive craniometaphyseal dysplasia and heart malformations.

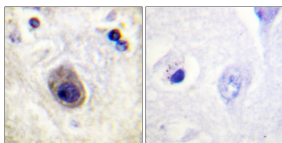
### Recommended Dilution

IHC-p: 1: 100 - 1: 300

ELISA: 1: 5000

Not yet tested in other applications.

### Images



Immunohistochemistry analysis of paraffin-embedded human brain, using Connexin 43 (Phospho-Ser261) Antibody. The picture on the right is blocked with the phospho peptide.

### Storage

-20°C for 1 year